

# Village of Evans Mills

## SEPTEMBER 1ST 2022 NEWSLETTER



**Photo Credentials: Ethan Ruttan**

Village Email: [Evansmillsclerk@outlook.com](mailto:Evansmillsclerk@outlook.com)  
Website: [www.villageofevansmills.com](http://www.villageofevansmills.com)

### Village Office Hours:

Monday - Thursday 9 AM - 5 PM (Closed noon-1 PM)

**VILLAGE BOARD MEETINGS:** Second Thursday of each month at 6 p.m. except for federal holidays. Notices will be posted online and in the Watertown daily times.

**DOG LEASH LAW:** There is a dog leash law in the Village of Evans Mills and the law is enforced.

**JACK WILLIAMS PARK:** The maintenance road that goes around the fields is only to be driven on by village employees. **Please do not drive on this road as residents use it for walking.**

Parking: Vehicles left overnight/unattended for long periods of time will be towed at the owner's expense.

### Mayors Spotlight:

*By Robert Boucher*

Thank you to the 200 club, especially Jack Brand, 10th Mountain Division 7th Engineer Battalion 1st Brigade, and the Village Residents for helping our village spruce up the Jack Williams Community Park for the centennial celebration. Our park deserves some extra care and we appreciate the help.

**JACK WILLIAMS PARK:** County, State, and Local Law Enforcement agencies are keeping an eye on the park as we have has numerous complaints from residents.

**VILLAGE SIDEWALKS:** Sidewalks are the financial responsibility of homeowners/business owners. The replacement/maintenance can be serviced by contacting the DPW if you do not wish to utilize an outside party.

**VILLAGE SPEED LIMIT:** According to Local Law #1 of 2020, the village speed limit is 25 MPH on all village streets. **THIS LAW IS STRICTLY ENFORCED. THE SCHOOL SPEED ZONE IS 20 MPH**

**SCHOOL:** As many residents know, school will be starting on September 6th. Please watch out for school buses and slow down for pedestrian traffic.

### *LeRay Historical Society:*

BY ROBERT BOUCHER HISTORIAN

**Hours Wednesdays 10 AM - 12 PM**

**By Appointment**

The Museum is always accepting DONATIONS. We are trying to keep the history of the town and village alive. We appreciate residential assistance!

The museum is looking for legal-sized filing cabinet donations as well.

*Thank You!*

### *Clerks Corner:*

#### **Water & Sewer Billing:**

Due October 5th - Penalties will be added after due date

#### **Office Closings:**

September 5th - Labor Day

September 12th-16th

September 22nd - Closing at 1 PM

October 10th - 11th

- Please make sure you order your garbage tickets early





**Photo Credentials: Ethan Ruttan**

**COMMUNITY EVENTS:**

**Evans Mills Centennial Celebration**, September 10th - 11 AM Parade, starts at Evans Mills Primary and ends at Jack Williams Park, where there will be activities for all. See the flyer for details.

**Halloween:** On October 31st, Trick or Treating starts whenever children start to go around and ends at 8 PM. Please turn on your porch light to let the treaters know you are participating.

**FRIENDS OF EVANS MILLS:**

*By Mary Palmer - Committee Member*

Our committee would like to thank the Town of LeRay for their generous donation of the brackets that have the hometown hero and founding father banners displayed around the village.

**REFUSE NEWS:**

The Village of Evans Mills provides trash services. Each bag must have a sticker; stickers can be purchased online or in person at the Village Office. Refuse pickup is on Thursdays; please have containers by the road no later than 8 AM. BAGS MUST BE CLEAR. Recycling is free for village residents; containers must be out by 8 AM on Wednesdays. All recyclables must be separated!

**Transfer Stations:**

**Town of LeRay Transfer Station:**

26506 US Route 11 Evans Mills, NY 13637, (Between Bradley's Military and J&J Plaza). Phone: 315-629-1550 - Hours 8:00 AM to 5:00 PM Tuesday & Thursday - 8:00 AM to 2:00 PM Saturday (Except Holidays)

**Jefferson County Transfer Station:**

27138 New York State Route 12 Watertown, NY 13601 - Phone: (315)786-6900 - Hours - Monday - Friday - 7:30 AM to 3:00 PM & Saturdays - 7:30 AM to 1:00 PM

**WATER & SEWER:** Water & sewer bills are read quarterly. The quarters are as follows:

June/July/August; **Billed Sept 1st**

September/October/November; **Billed December 1st**

December/January/February; **Billed March 1st**

March/April/May **Billed June 1st**

- To connect or disconnect water service, contact the Village office at 8706 Noble St, Evans Mills, NY 13637 (315) 629-4753 or email: evansmillsclerk@outlook.com.
- We are now accepting [credit card payments for water/sewer invoices](#). Online payments have a 3% Fee.
- Payments can also be made in person, by mail, or left in the drop box located on the front door.
- Unpaid 2022 Water & Sewer bills will be re-levied onto village taxes after April 1st, 2023.

As previously presented, water and sewer base rates will continue to increase to help offset the cost of the disinfection project and new wastewater (sewer) treatment plant.

Taking effect March 1st, 2022, this year's rates are as follows: Water = \$45/Unit & Sewer = \$80/Unit (INSIDE ONE RESIDENTIAL UNIT ONLY). For example: if your house/property is billed as a 1 1/2 unit, your bill will differ.

**SEWER SYSTEM:**

Sump pumps may only be dispensed into property owners' yards. Sump pumps should not be expelled into village streets or sewer systems. THIS IS A HAZARD AND LIABILITY TO NOT ONLY PROPERTY OWNERS BUT THE VILLAGE SEWER SYSTEM.

The Village is progressing toward installing the NYS-mandated disinfection unit at the wastewater treatment plant. The Village is working with Fourth Coast to get our plant up and running.

**PLEASE SEE ATTACHED WHAT NOT TO FLUSH FLYER**

**EVANS MILLS PUBLIC LIBRARY:**

*By Margaret Hedden, Library Manager*

We had a very successful Story Hour this year! 80 children listened to stories being read and then did crafts—fun for one and all. We continue to update our collection of books by receiving new books monthly. Also, the online collection is constantly changing. A library card is free and available to everyone; all you need is proof of residence and two proofs of identification. We do NOT charge fees or fines. We would love to see you!

**HOURS:** Monday and Tuesday 1-5 p.m.; Wednesday 3-8:30 p.m.; Thursday 1-5 p.m. and Saturday 9-noon.

If your organization would like to put any information in our newsletter, please call the village office at 315-629-4753. The newsletters are included with the quarterly water/sewer bills.

**PLEASE FILL OUT THE CONTACT FORM ON THE NEXT PAGE; THE VILLAGE OFFICE IS TRYING TO UPDATE RECORDS FOR EMERGENCY PURPOSES.**

**FOR INSTANCE, WE HAVE HAD ISSUES CONTACTING RESIDENTS REGARDING WATER SHUT-OFFS/REPAIRS.**

**THANK YOU!**

COME CELEBRATE THE RICH HISTORY  
OF OUR  
COMMUNITY

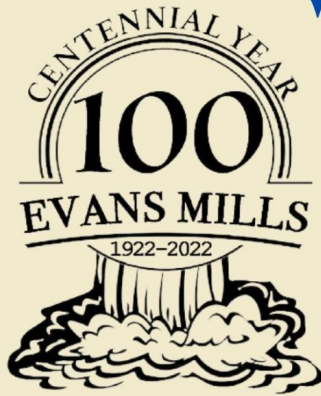
# CELEBRATE

## 100 YEARS

Evans Mills, New York

**SATURDAY,**  
**SEPTEMBER 10, 2022**

Schedule of Events



- 9am-2pm: LeRay Historical Museum
- 11am: Community Parade
  - Float Contest!
- 11am -4pm: Craft Fair
- 11am - 6pm Food Trucks
- 1pm - 3pm Kids Games
- 1pm - 3pm Dunking Booth
- 3pm - Old Tyme Softball Game
- 7pm - 1920's Themed Parties at The John Hoover Inn & The Last Call

[evansmillscelebrates.com](http://evansmillscelebrates.com)

Please detach this bottom portion and return it to the village office  
**UPDATING CONTACT INFORMATION FORM**

Name: \_\_\_\_\_

Email: \_\_\_\_\_

Address: \_\_\_\_\_

Phone Number: \_\_\_\_\_

Preferred Mailing Address: \_\_\_\_\_

COMMENTS:

ACCOUNT # \_\_\_\_\_





# PROTECT YOUR SEWER

## WHAT NOT TO FLUSH

### **WHAT NOT TO FLUSH:**

These are some of the WORST sewer culprits:

- Disposable wipes
- F.O.G. (fats, oils and grease)
- Feminine sanitary products—tampons, applicators or pads
- Diapers or nursing pads
- Dental floss
- Paper towels or tissues
- Hair
- Cotton balls or Q-tips
- Condoms

Do your sewer a favor: always put these (and any other waste items) in the trash—not down your toilet or drain!

### **WHAT SHOULD YOU FLUSH:**

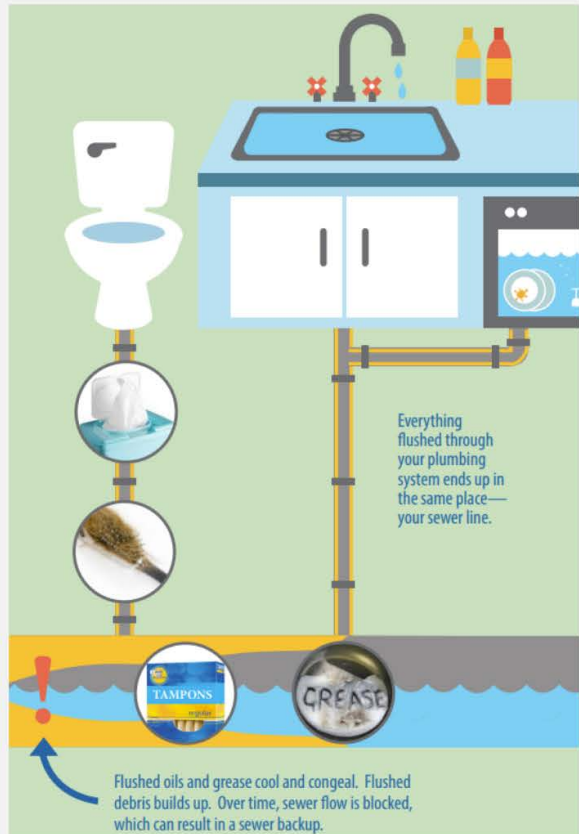
Basically, 2 things (besides water):

- Toilet paper, and
- Human waste

Flushing anything else tempts trouble—not just for your home, but for the public system and the environment as well.

Did you know that all the “used” water in your home goes through your wastewater (sewer) pipes? Whatever you “flush” down the toilet, sink, garbage disposal, or dishwasher all combines together.

Flushing the wrong things—things not designed to break down or be handled through the wastewater system—can cause debris to build up in pipes and eventually create a sewer backup—an expensive health hazard for you, and possibly your neighbors!



# **WATER & SEWER UNIT BREAKDOWN**

1. ONE-FAMILY RESIDENCE - 1 UNIT
2. TWO-FAMILY RESIDENCE - 1 3/4 UNITS
3. THREE FAMILY RESIDENCE - 2 1/2 UNITS
4. FOUR FAMILY RESIDENCE - 3 1/4 UNITS
5. COMMERCIAL USE WITHOUT LIVING QUARTERS - 1 3/4 UNITS
6. COMMERCIAL USE WITH LIVING QUARTERS FOR ONE FAMILY - 2 1/2 UNITS
7. COMMERCIAL USE WITH LIVING QUARTERS FOR TWO FAMILIES - 3 UNITS
8. COMMERCIAL USE WITH LIVING QUARTERS FOR THREE FAMILIES - 3 3/4 UNITS
9. MUNICIPAL & PUBLIC BUILDINGS - 3 UNITS
10. CHURCHES - 1 UNIT
11. HOTEL WITH LESS THAN 10 ROOMS AND BAR AND RESTAURANT - 3 UNITS
12. TAVERN AND BAR AND RESTAURANT - 3 UNITS
13. FUNERAL PARLOR - 2 UNITS
14. PUBLIC SCHOOLS - The following procedure shall be used to determine the number of Sewer use Units assigned to a Public School. Whether faculty, staff, students, or district personnel, twelve persons shall equal one Sewer Use Unit. On March 1st of each year, the school superintendent of any Public School shall certify to the Village, based on a census taken of all faculty, staff, students, and district personnel assigned to any of the buildings at the school site, the total number of persons to be used in calculating the number of Sewer use Units for the School District. The total number of Sewer Use Units calculated in March of each year shall be used to determine the Sewer rent to be paid by the Public School commencing with the next billing period, except that the Sewer Rent to be charged to a Public School in the third quarter, the months July, August, and September, shall be one half of the amount determined by the procedure set forth above.
15. ORDINARY COMMERCIAL USE UNLESS OTHERWISE LISTED - 1 3/4 UNITS
16. FOR EACH ADDITIONAL FAMILY OVER LISTING DESCRIBED - 3/4 UNITS
17. LAUNDROMAT (per washer) - 1/2 UNIT
18. MOTELS (per unit) - 1/4 UNIT
19. ESTABLISHMENTS NOT LISTED ABOVE - The number of Sewer Use Units attributable to any establishment or activity which is not set forth above shall be established by resolution of the Village Board of Trustees in consultation with the Village's sewage system operator and the owners or operators of the establishment or activity.

(b) The term "Sewer Use Unit" shall mean the number assigned under this local law, as set forth below, to any activity or establishment connected to and discharging sewage into the Village sewer system, which number is a reasonable approximation of the relative amount of sewage such activity or establishment discharges into said system. The number of Sewer Use Units assigned activity or establishment shall be multiplied by the Base Sewer Rent to determine the total Sewer Rent due from that activity or establishment.

(c) The Village Board of Trustees of the Village of Evans Mills shall at least annually, after examination of the revenue and expenditures of the Village sewer system, establish the Base Sewer Rent to be charged for one Sewer Use Unit.